

Testing Unit with Software, PC and Printer

iQ2[™] Technical Data*

Basic installation

- Single Module to test all Evenness properties

Additional Options

- Hairiness Index (Hi)

Application range

- Spun Yarn, Roving & Sliver : 4 tex to 12 ktex

Measuring principle

- Evenness : Capacitance
- Hairiness Index : Optical

Sample Presentation

- Yarn - Manual
- Roving / Sliver - Manual

Analysis Reports

- Spectrogram (Peak & Drafting Wave) Analysis
- VL Curve Analysis

Ambient Condition

- Relative Humidity : $65 \pm 2\%$
- Temperature : $21 \pm 1^\circ\text{C}$ ($70 \pm 2^\circ\text{F}$)
($27 \pm 1^\circ\text{C}$ ($80 \pm 2^\circ\text{F}$) for Tropical Conditions)

Power consumption

- Single Phase 1KVA, 2 KVA UPS

Compressed air consumption

- 13 m³/hr at 6 Bar

* Subject to change without prior notice

premier evolvis pvt. ltd.
SF No. 79/6, Kulathur Road
Venkitapuram Post
Coimbatore - 641 062, India
Phone : +91 422 6611000
Fax : +91 422 6611005
E mail : sales@premier-1.com
www.premier-1.com



200117

iQ2[™]

More than an Evenness Tester. The Quality Expert

PREMIER

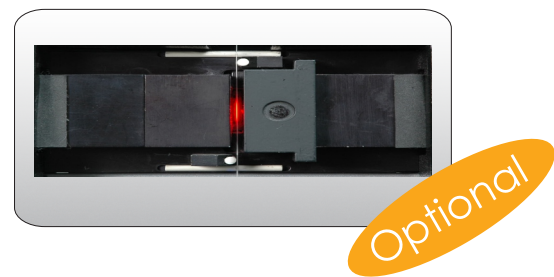


iQ
intelligent QUALITY

“Unique” Features

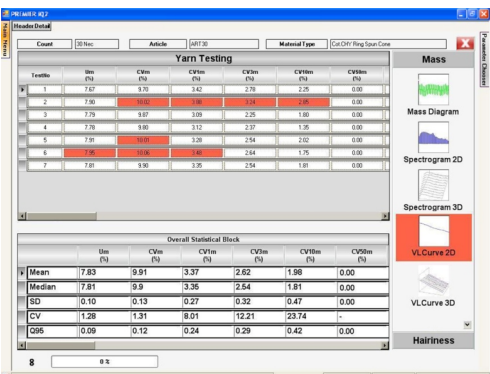
Hairiness Index

Hi: The traditional Hairiness Index is used for trading purpose, which measures hairs irrespective of its length over 1 cm yarn length



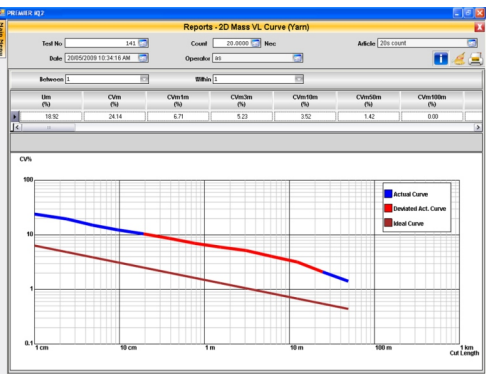
Exceptions

The Quality expert equips the user with knowledge by highlighting the exceptions during testing which prompts the user to look into specific areas



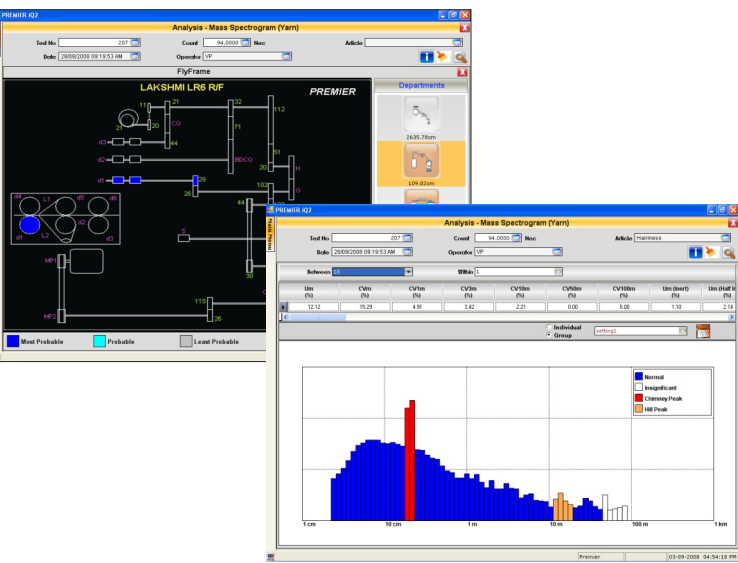
Variance Length Curve Analysis

The deviation in Variance Length curve is marked and the specific department which is responsible for the high CV is highlighted automatically



Spectrogram Analysis

Automatically identifies faulty machinery component and back tracks faults in the process upto Carding department with more than 500 gearing plans for Cotton, Man - made fibre and Worsted machinery



Parameters Measured

Numerical Results

- U%, CV_m at various cut length
- Imperfections (12 levels)
- Index of Irregularity
- Relative Count
- Hairiness Index and sh

Graphical Results

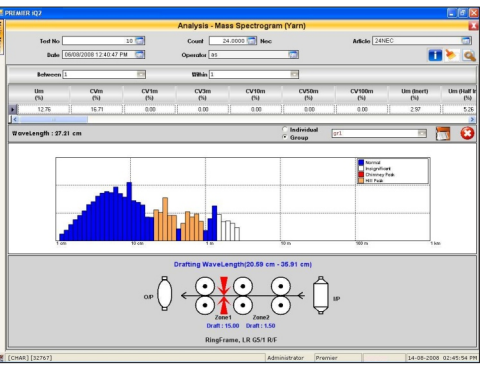
- Mass & Hair Diagram
- Spectrogram (2D, 3D)
- VL Curve (2D, 3D)
- Histogram
- Trend Analysis

Yarn Testing						
TestNo	Um (%)	CVm (%)	CVm1m (%)	Thin(+50%) (/ Km)	Thick(+50%) (/ Km)	Neps (+200%) (/ Km)
1	10.72	13.56	4.85	10	50	130
2	10.67	13.51	3.74	3	88	185
3	10.33	13.07	4.36	0	43	128
4	10.66	13.48	4.04	15	55	160
5	10.96	13.85	4.47	10	60	140
6	10.34	13.06	3.96	0	40	118
7	10.59	13.39	3.76	0	53	193



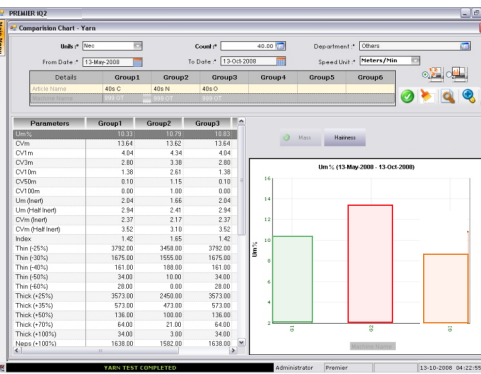
Drafting Wave Analysis

The draft zone responsible for the drafting wave is tracked automatically, with details of draft enabling the user to initiate corrective action viz; draft setting, draft distribution etc.,



Trend and Comparison

The unique comparison chart enables to compare all machines in a department and machines allocated to a Count group



Additional Features

- Mill Statistics Percentage (MSP) is available for Quality levels
- Inspection (Stop) Facility for any one of imperfections Thin/Thick/Neps with selectable sensitivity levels
- Overall tests can be 1000 (that is Maximum of 20 samples and 50 readings per sample or 10 samples and 100 readings per sample)
- Economic & Cost Effective